

GM2250C

Magnetic Stripe Reader/Writer

Operating Manual

Specification

- Communicate: Standard USB Cable Sign Level, 9600 BPS By Defaulted, 8-Bit
- Dimensions :212(L)X64(W)X63(H) mm
- Weight:Approx.:1.35Kg
- Power Supply: External Switching Power 24V/2.2A
- Card Standard: ANSI, ISO, ABA
- Recording Density: track Single Direction writing/reading
- Data structure: ' %'1 Track Data?'+' : 2 Track Data '?' 3 Track Data?
- Operating Temperature:-30 °C ~ 70 °C (Storage) -10 °C ~ 60 °C (Operation)
- Relative Humidity:-10 %~ 90%rh(Storage) -10 %~ 85%rh (Operation)
- Durability: 1,000,000times

Package Including

- 1unit GM2050C Machine
- 1Unit 24V Power Adapter
- each Hi-co or Lo-co magnetic card
- 1 Cleaning Card
- 1 GM2050C Software

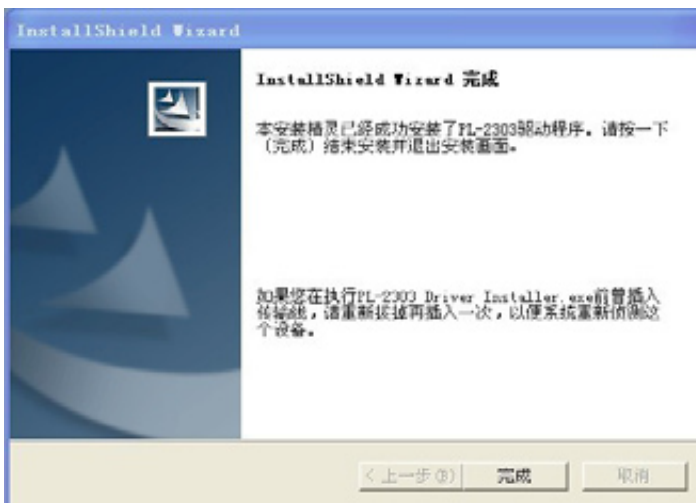
Application

- Bank System
- ID Identification
- Credit card, Membership ID card
- Security Management System
- Tax-Controlled System
- others

Preparing for using machines

1. Windows XP System: Install USB Drivers

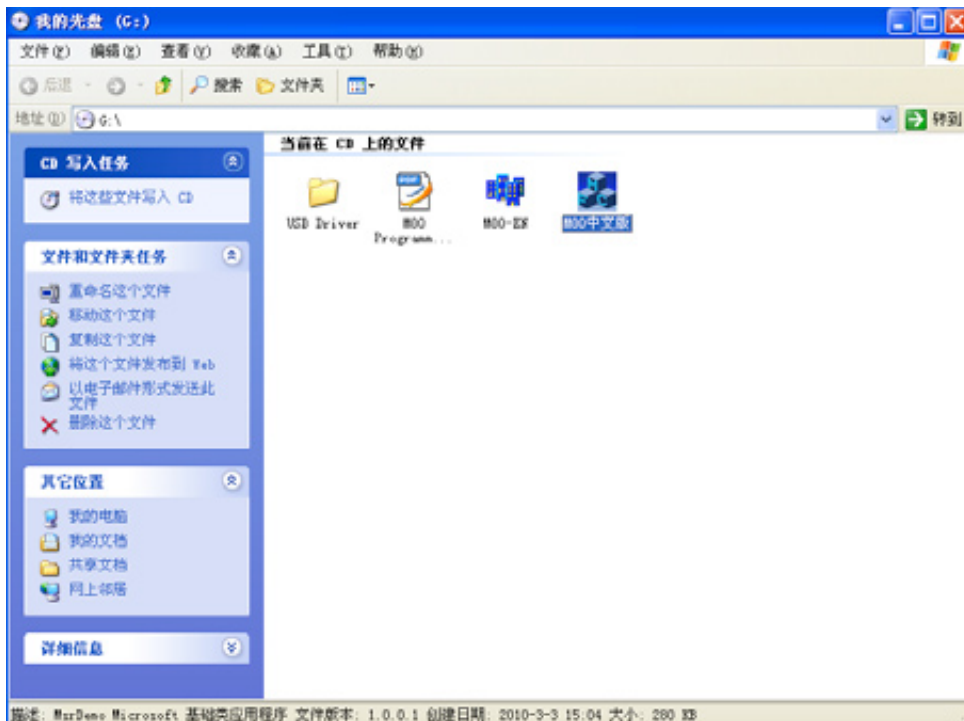
Put CD Disk into CO-ROM, Installing USB Drivers, Click “Driver Installer.exe”(if System is “Windows vista”, Click ”Vista Driver Installer.exe” Pop-up Window Displays, then Click “Next” Button .



As the above Picture, then Click” Finish”. USB finish installed.

2. Install Application Software

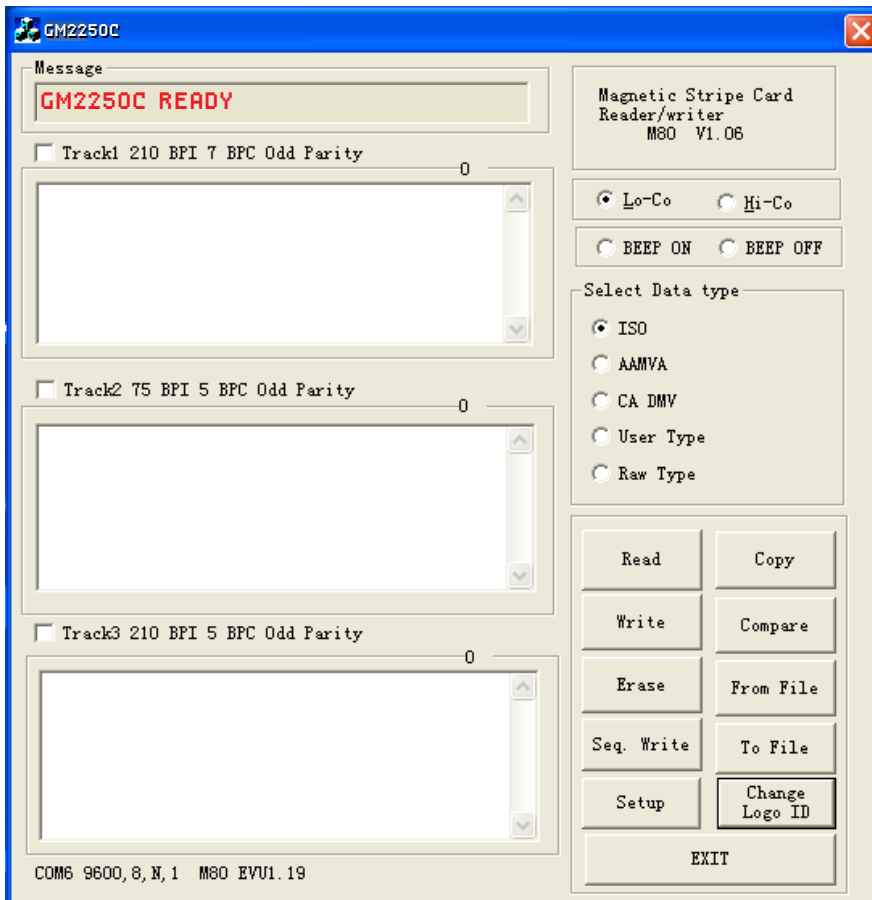
Put CD Disk into CO-ROM, See as followed Picture, you can Choose “Chinese Version” or “English Version” Operating Interface, Copy it to the Desktop



Software Operating Manual

*Connect GM2250C with Power Adapter and the Power Supply, then Plug USB port into PC(Computer), final Open GM2250C software interface, Click“ Confirm “, then you can use it easy as follow.

Picture (Note: if Connect successfully , you will see the Message“ GM2250C READY“ on the Left Corner)



(Note: if the Operating interface showed" no Connetct GM2250C",Please Pull the Plug and USB, then install them again)

- GM2250C Correct operation way as follow picture

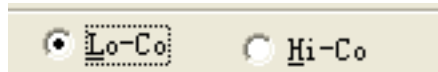


- Swipe cards, make sure the magnetic stripe side of card should be the same as follow picture



1. Lo/Hi-Co magnetic cards

Open the Software , you will see the ‘**Lo/-Co**’ or ‘**Hi-Co**’ Button, writing the magnetic cards, make sure the “**Hi-co magnetic card**” should be the chosen “**Hi-Co**”, “**Lo-Co magnetic cards**” should be chosen” **Lo-Co**”



Hi-Co magnetic cards



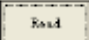
Hi-Co magnetic cards

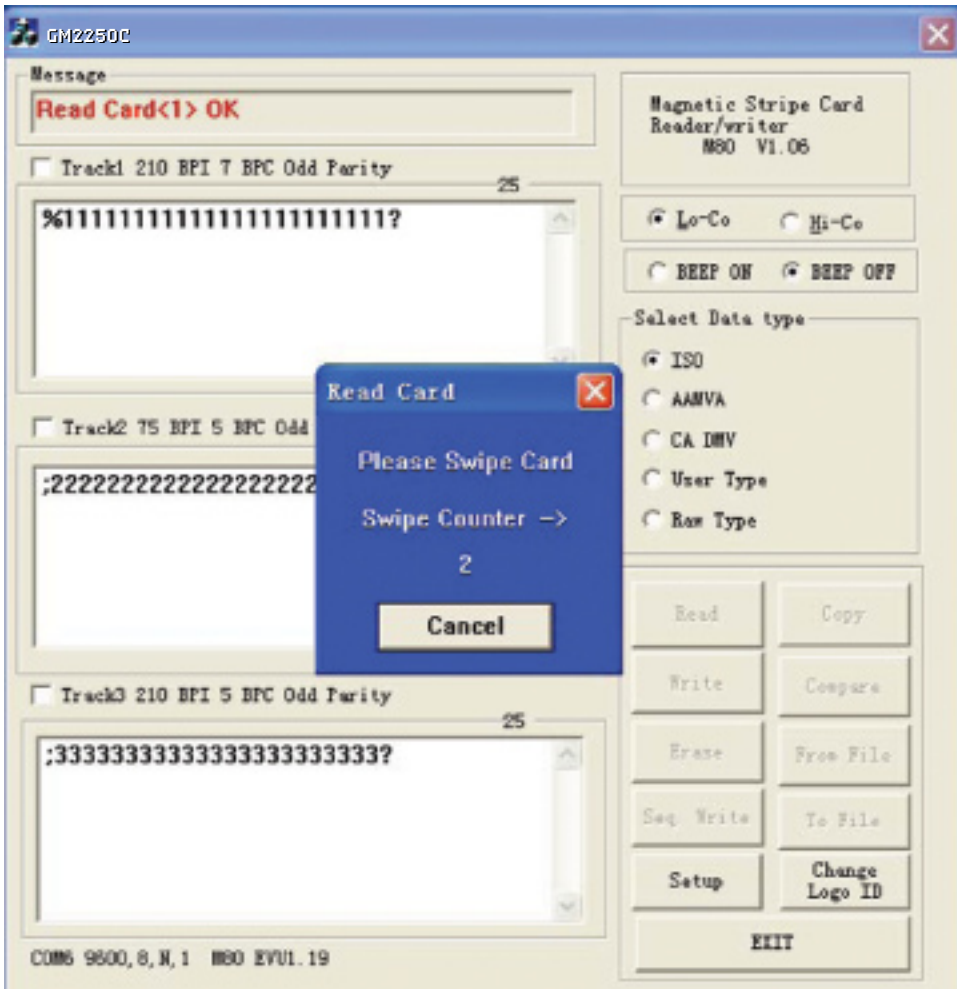
2. Open/Close Beep Sound

This Button can be controlled the Buzzer **Valid or Invalid**, you can choose it according yourself requirement.

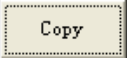


3. “Read” magnetic cards

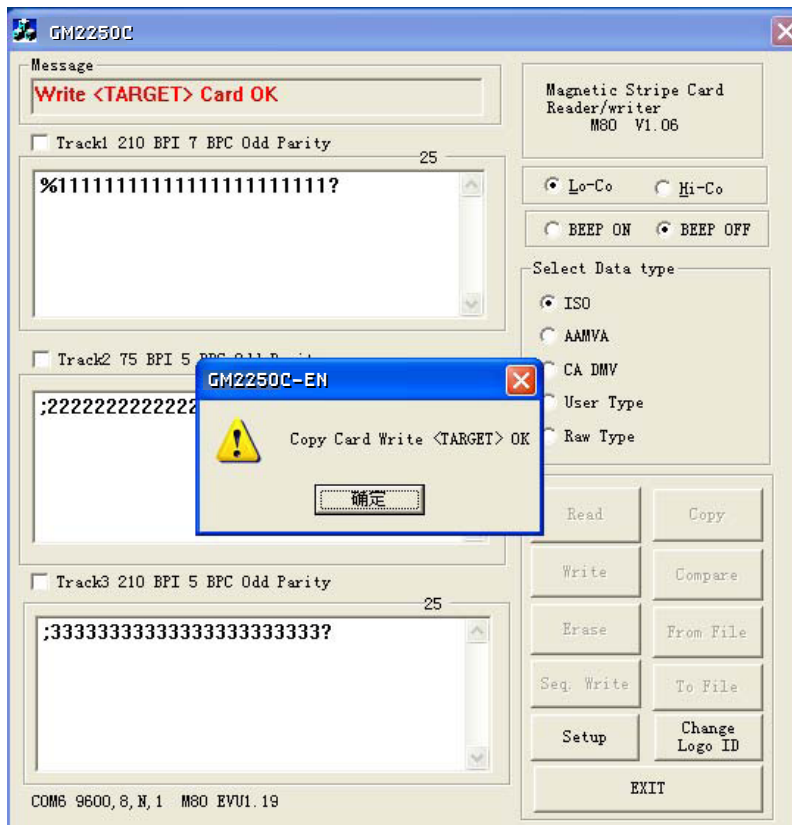
Confirm whether the Magnetic cards have any data into the magnetic cards or not, Please Click ” Read” Button,  and “Read” indicator light will be lighted , then Swipe the cards, the data of themagnetic cards will be showed on the Followed Dialog Box.



4. “Copy” magnetic cards

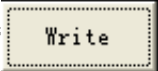
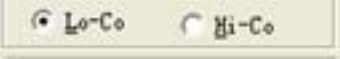
Copy one card data into another Blank magnetic cards, Please Click “Copy” Button, -  , Swipe

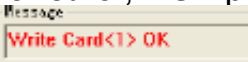
The data cards first, then swipe the copy cards again, it'll be showed , if swipe cards successfully, both of them(two cards data) will be the same exactly. If not, please try again

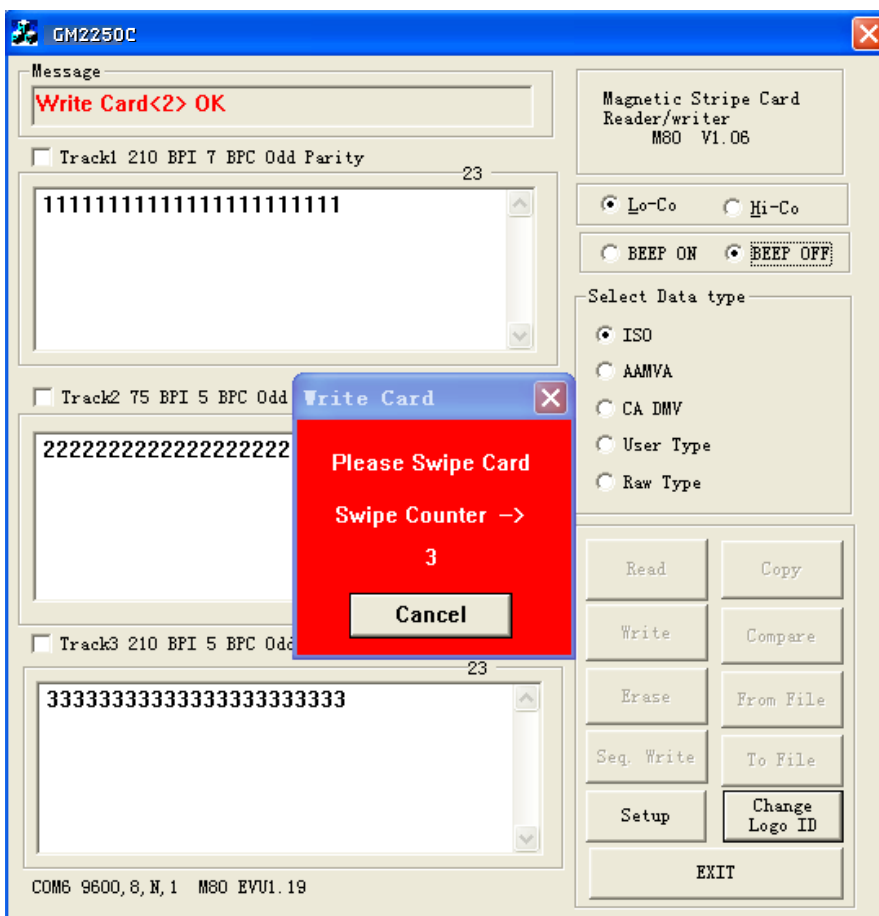


5. “Write” Magnetic cards

Input the needed data into the relevant Track(1&2&3)then Click

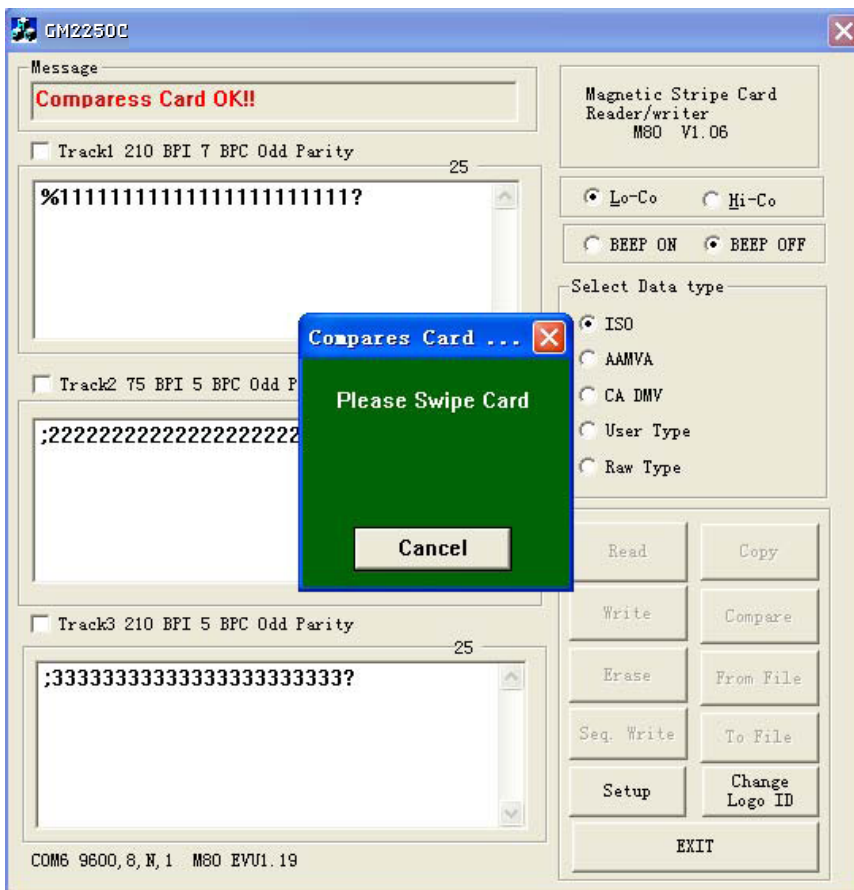
“”, write the magnetic cards later, if showed swipe wrong, please check the “Hi-co” or “Lo-co” Button 

setting correct ornot and the input data should be according to ISO standard or other, if Swipe correct, the top left will be showed 

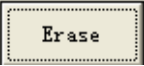


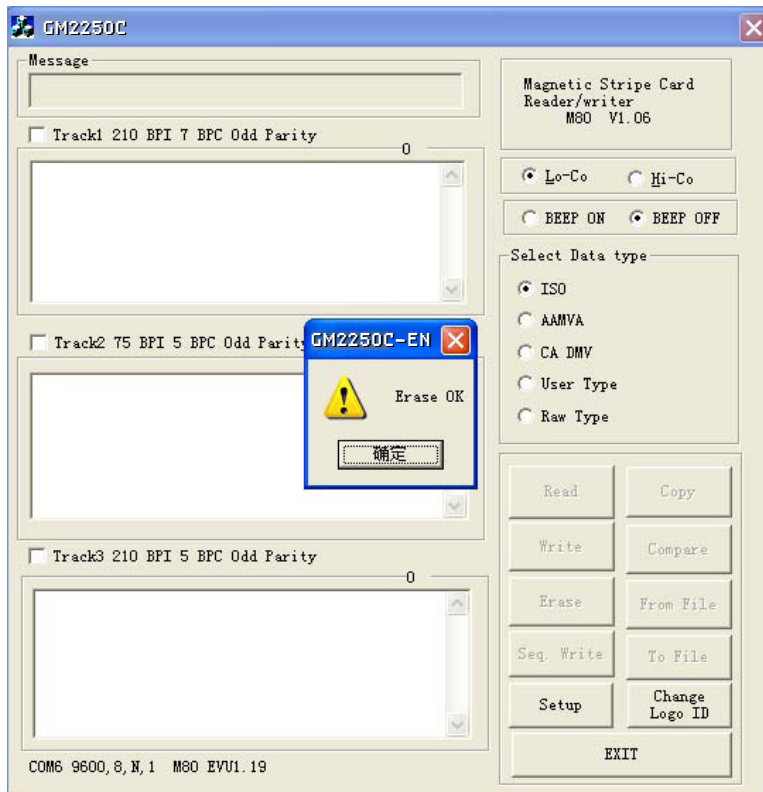
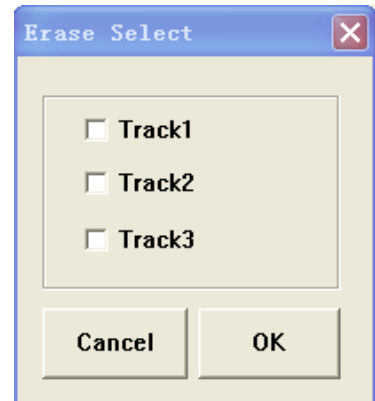
6. "Compare" Magnetic Cards

Comparing both of cards data are in harmony with each other or not, Please Click "Compare" Button, then showed the window, Swipe the needed compare cards again, if the Message Box showed follow message (the compare cards successfully)



7. “Erase” Magnetic cards

If you don't need any data of the magnetic cards, Please choose “Erase” the data of cards. , then Pop-Up Windows “Erase Select” please erase each Track message required, Click” Ok”, if showed the window “GM2250C-EN”, that mean Erase cards successfully.

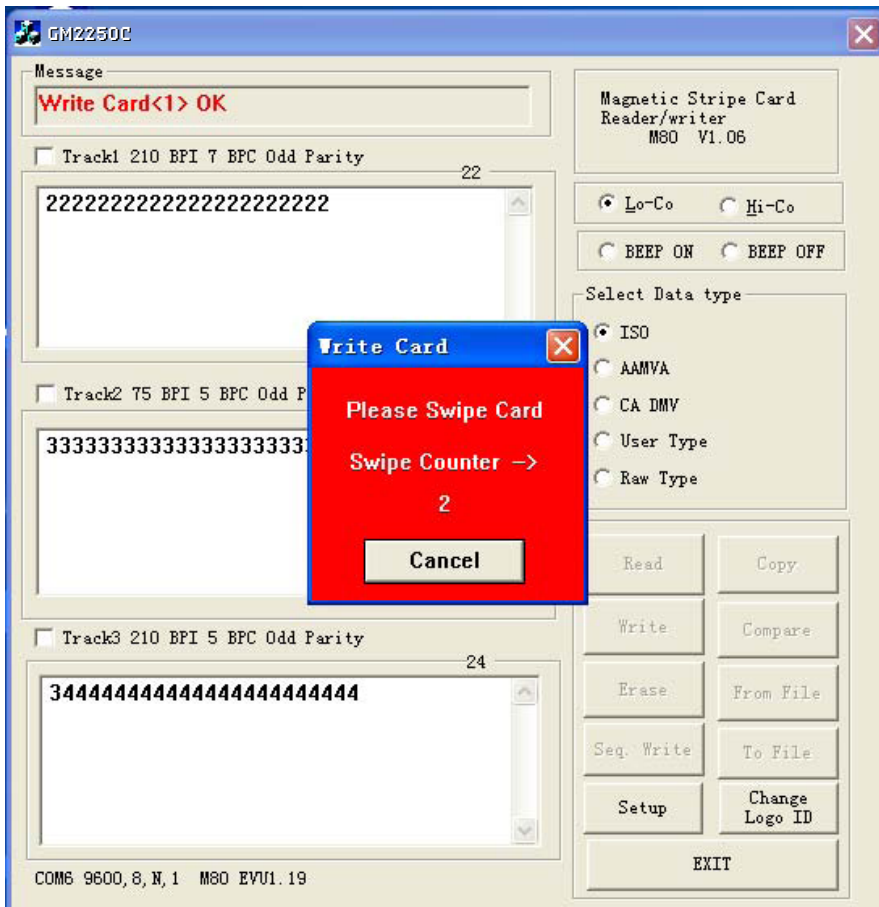
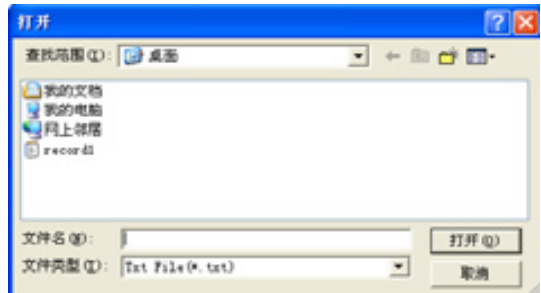


8. "From File" to write card

If Data doesn't need edited by Yourself. You can get them from the Computer Files(data

files),Click" From File , Choose the files you needed, then swipe

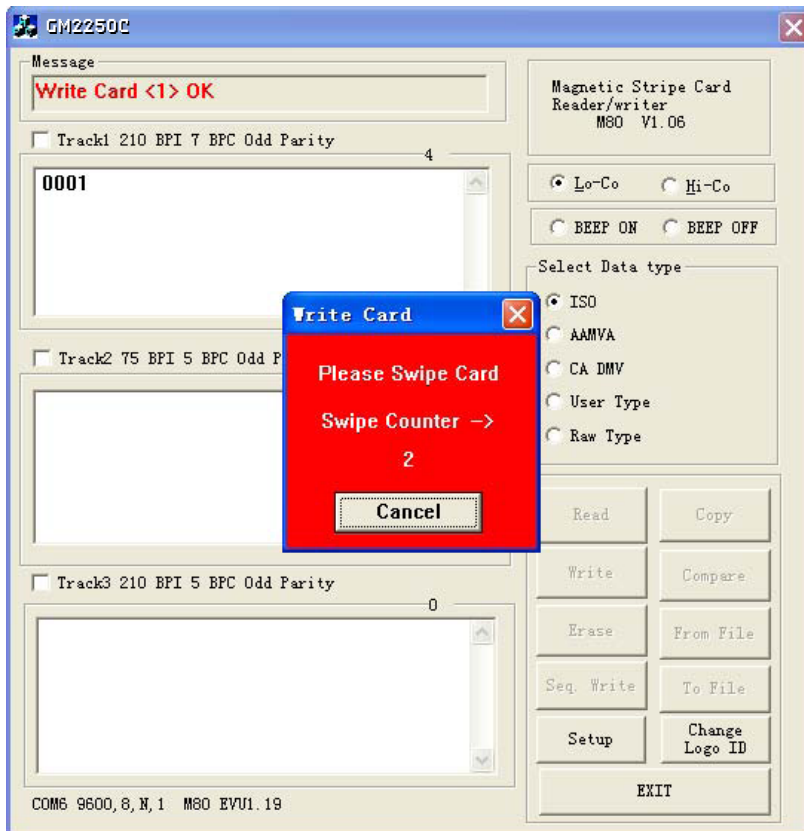
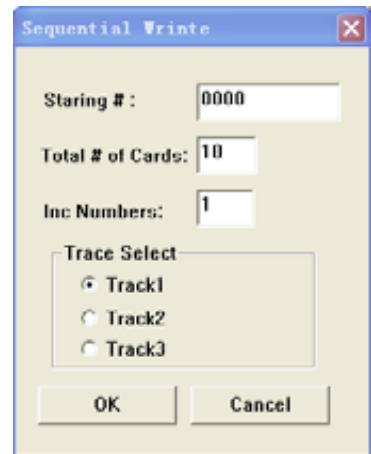
card later. As followed picture:



9. Sequential write cards


According to your need to Click "Seq. Write", Pop-up the Dialogue Box, Choose the track you need to Sequential write. Then swipe cards .the data will be wrote into the cards Sequential.

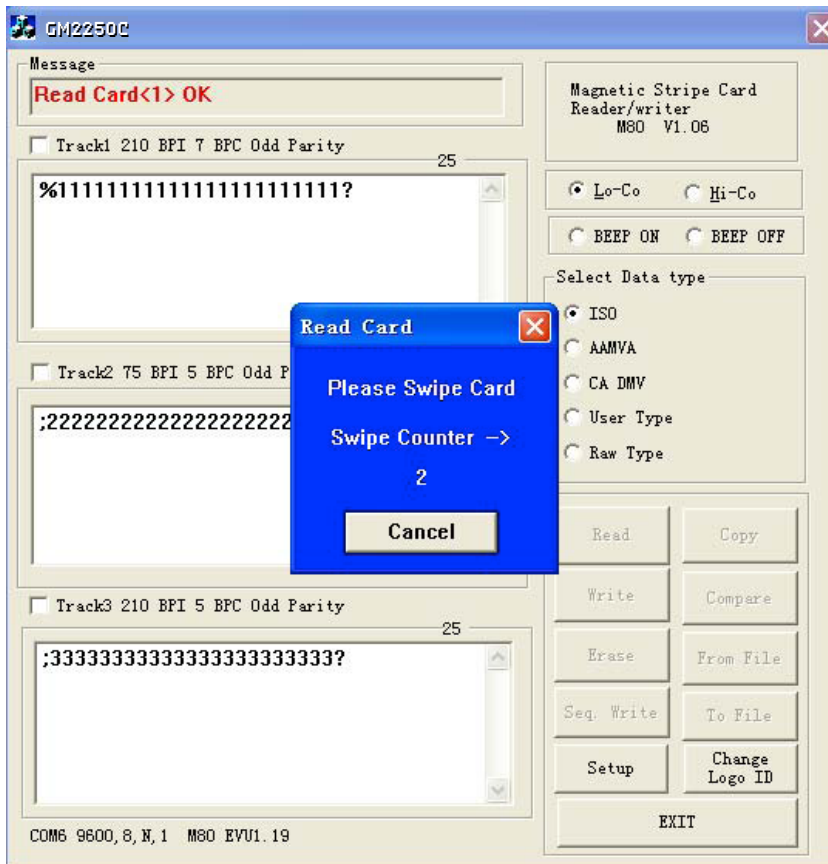
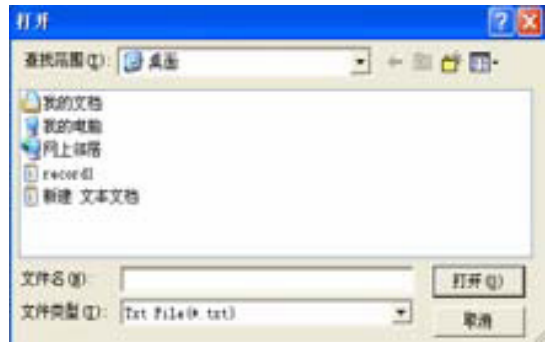
Seq. Write



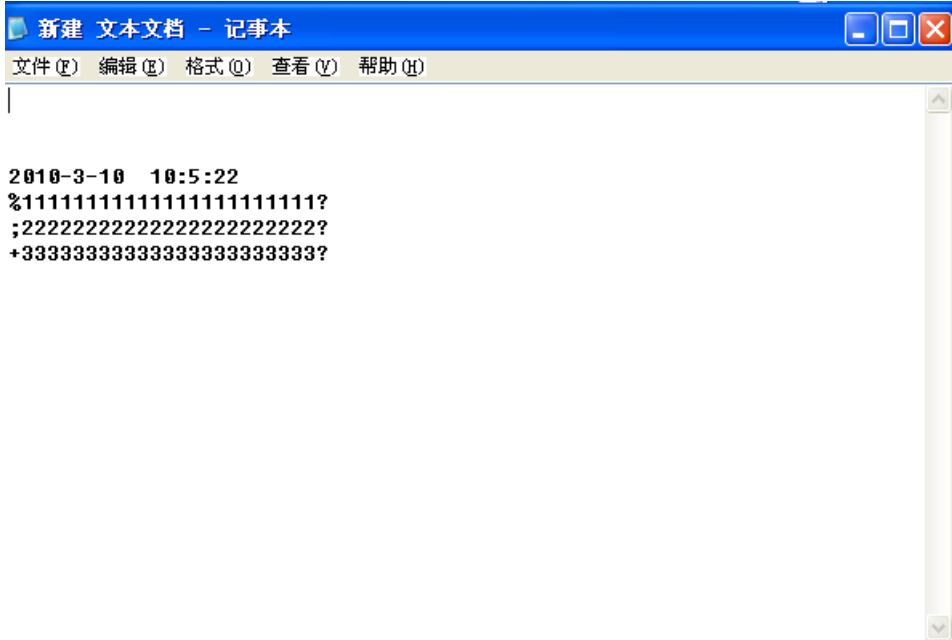
10. Read cards save “to files”

Save data to file, Please Click”

” Button, Pop-Up the Dialogue box ,Double-Click the file(you need to save the file, then swipe cards. The data will be save into the file automatic.



Open the saved file, you will see the data. As follow picture:



11. Setting

Setting the relevant parameters according your requiredT

12. Change the Log in ID and Password

Change another New Password, it can avoid somebody to change your data, so that you can protect the relevant important information

Maintenance

The Magnetic Stripe Card Reader/Writer is a advanced high-tech products, Please take care of it carefully, Long-time usage, if come across the followed problems, we can take some measures:

1:Some Magnetic Powder on the surface of the magnetic head ,Read/Write card success rate declines
Use the Cleaning card to clean the magnetic head several times.

2: Application program can't connected with Magnetic Swipe Reader/Writer
Communication not correct, Check the data cable is broken or not and Confirm the parameters setting; Checking the USB Driver is broken or not, re-install the Driver again. Checking the USB Port whether connect successfully or not; Checking the External Power Supply is normal or not

